

Kingston Clinical Update



Paediatric Assessment Unit (PAU)

"I am delighted to announce that the way acute care is provided to paediatric patients at Kingston Hospital is changing with the opening of our new Paediatric Assessment Unit (PAU). Patient care and experience will be enhanced with more efficient flow through the hospital and easier access to senior paediatric opinion.

This includes direct review of GP referrals by a senior paediatrician in a dedicated acute clinic and consultants delivering care on the PAU between 0800 and 2200, seven days per week"

Dr Jon Filkin - Consultant Paediatrician & Clinical Director, Paediatrics & Neonates

[Click here for more information...](#)



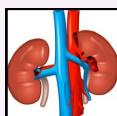
Changes to Microbiology Laboratory Services - clarification

There have been a few teething problems in the development of South West London Pathology (SWLP). [Click here for more...](#)



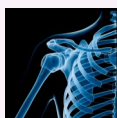
Pain Management

Our Chronic Pain Management Service differs from other local providers in that it is delivered by a multidisciplinary team. [Click here for more...](#)



New Advanced Kidney Care Clinic

We are now providing an Advanced Kidney Care Clinic for certain patients with declining kidney function. [Click here for more...](#)



Radiology and Pathology Patients

Please ensure that all GP requests for Radiology and Pathology include the patient's NHS number.



[Important GP enquiry e-mail reminder!](#)



[Click here for Choose & Book waiting times](#)

Education and Events

Cardiology GP Course

- 15th April 2015 - [Click here](#)

Orthopaedics GP Course

- 23rd April 2015 - [Click here](#)

www.kingstonhospital.nhs.uk/healthcare-professionals

For queries, please contact our GP Liaison Manager Bal Chohan:

E: Balvinder.Cohan-Rai@kingstonhospital.nhs.uk

T: 0208 934 2957

Living our values *everyday*

