

Kingston Hospital Clinical Update



South West London Pathology

On Monday 23rd November the processing of 'cold samples' will commence at St George's (SGH). Your samples will now be automatically taken to SGH. Your results will be available to you in the same way as is current practice.

[Click here for contact details..](#)



Online Maternity Referrals

GPs are now invited to send Maternity referrals directly via the website:
<http://www.kingstonmaternity.org.uk/your-pregnancy/maternity-referral-form.aspx>



Paediatric Clinics

As part of our plans to provide care closer to home, we have set up some paediatric clinics at Surbiton Health Centre and Ebbisham Health Centre.

[Please click here for more information](#)



We have two new heart failure nurses who have joined the Trust recently.

[Click here for their profile...](#)

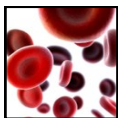


Wolverton Connect Service

[Please click here for more information](#)



[Paediatric Assessment Unit](#)



[Reminder to use new referral form for anticoagulant services](#)

Education and Events

[Breast Services update for Primary Care](#)

- Tuesday 24th November 2015

[Gastroenterology—Part 2](#)

- Wednesday 25th November 2015

[Cardiology Diagnostics case studies](#)

- Wednesday 9th December 2015

www.kingstonhospital.nhs.uk/healthcare-professionals

E: Balvinder.Cohan-Rai@kingstonhospital.nhs.uk

T: 0208 934 2957

BMI Coombe Wing

Living our values *everyday*

