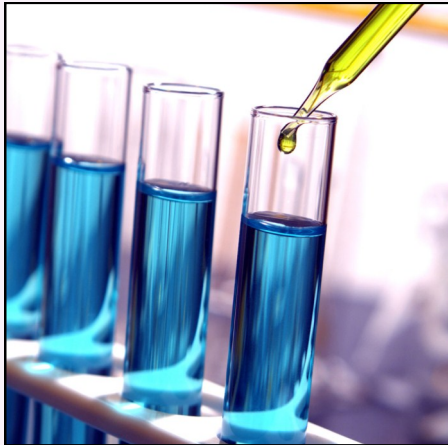


Kingston Hospital Clinical Update



Community Falls & Fractures

In collaboration with our community colleagues, KHFT has set up community falls and fracture service. All patients referred to the falls and bone health service will have a multi-factorial risk assessment with a physiotherapist, where any modifiable risk factors will be addressed.

[Click here for further details and how to refer..](#)



Opening Times for Direct Access

X-Ray Services — Normal walk in service on the Kingston main site and Surbiton Hospital throughout the Christmas period during the hours of 9-5pm. The service is closed on bank holidays: Friday 25th December, Monday 28th December and Friday 1st January.



Walk ECG Service — There is a normal walk in service for ECG's at the Cardiology Department at Kingston Hospital over the Christmas period. The services closes at 3pm on Thursday 24th and 31st December. The service will be closed on the bank holiday, Friday 25th December, Monday 28th December and Friday 1st January 2016.



Wolverton Sexual Health Service

Please note the opening times for the service over the Christmas period.
[Please click here for more information](#)

GP Education Events

We are working on our Primary Care Education programme for next year. If there are specific topics you would like us to include, please contact Bal Chohan on Balvinder.chohan-rai@kingstonhospital.nhs.uk

www.kingstonhospital.nhs.uk/healthcare-professionals
E: Balvinder.Cohan-Rai@kingstonhospital.nhs.uk
T: 0208 934 2957



Living our values *everyday*

